

nQuire User guide

IMPORTANT – new user validation: Before starting, please ensure that you have been granted access to the nQuire application. You will have been provided with a userID and password which will require changing when you first log in. If you have any problems gaining access, please contact nQuire.Administration@gosh.nhs.uk

IMPORTANT – browser compatibility: Before browsing results, please ensure that you have accepted any certificates that your browser software needs to download in order to connect securely to the nQuire application.

Supported browsers are **Internet Explorer version 9** and above; and **Firefox**. Other browsers including Apple products are not explicitly supported by our nQuire supplier, Integrated Software Solutions (ISS). These are used at your own risk, and have not been tested or validated by the GOSH laboratories. You may need to contact your ICT department to arrange for installation of appropriate browser software if your current applications do not meet the requirements.

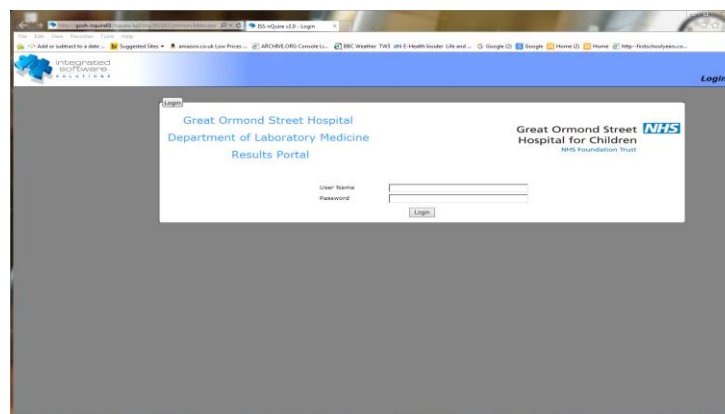
When using Firefox web browser, the following add-on has to be activated to view embedded reports

<https://addons.mozilla.org/en-us/firefox/addon/open-in-browser/>

Provided you are connected to the internet, this link will open the nQuire application,

<https://nquire.gosh.nhs.uk/nquire/apl/inq/ISS.UI.Common.Main.zen>

This may be copied to a desktop shortcut. You will be presented with the nQuire log in screen



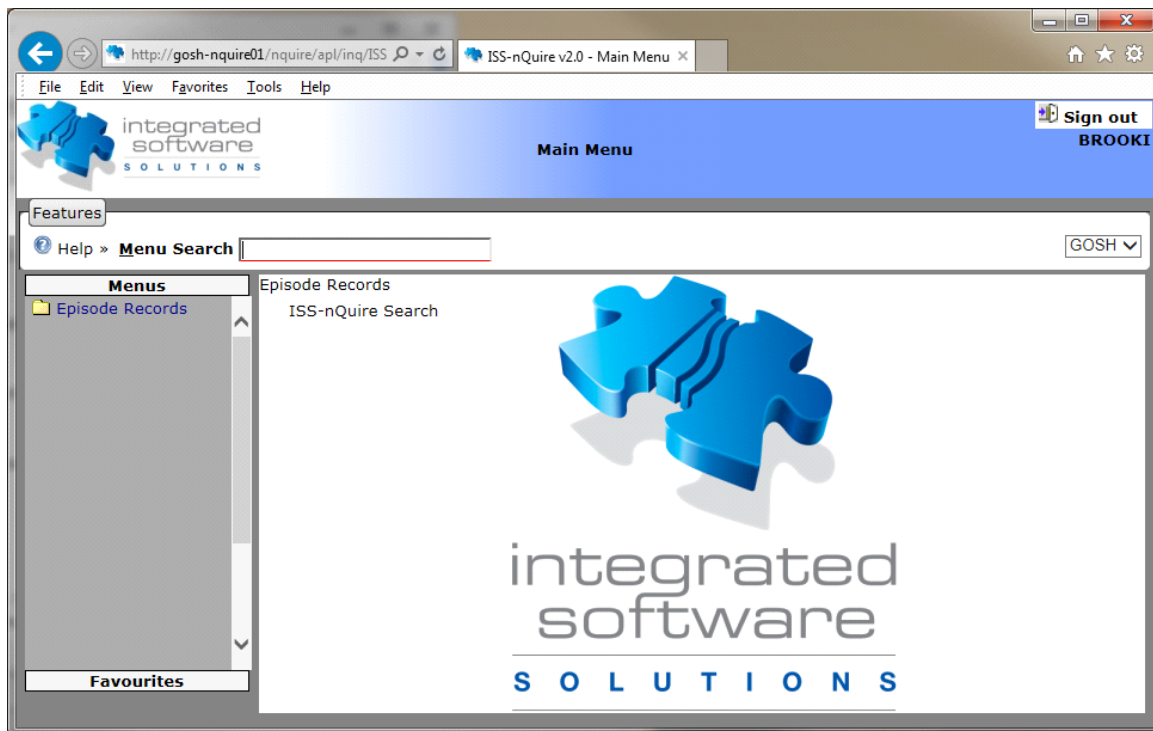
Enter your userID and password exactly as given to you. The system will ask for a change of password when you first log in.

Passwords must contain:

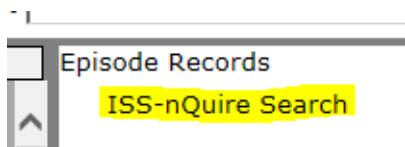
- At least eight characters
- At least one upper case character
- At least one number
- At least one punctuation character

Passwords will expire after three months.

Once you have successfully logged in you will see this screen:



You will have one menu group called: 'Episode Records' which contains one menu option called 'ISS-nQuire Search' as below:



Click on the 'ISS-nQuire Search' option.

Episodes are automatically identified for the Health Care Provider (HCP), displaying episodes in reverse chronological order (Date Requested). It is possible to select an episode from the listing or filter the list for a patient by Patient Name, Patient Number (MRN) or Lab Number using the column header filters in the episode table.

New Results (episodes not yet viewed by the HCP) are displayed on the first tab, shown by default when logging into the ISS-nQuire screen. Episodes will remain on this tab until results have been viewed. The episode will also exist under the All Results tab, and will be displayed in GREEN text to indicate that it has been viewed in this session. To update the episodes listed on the New Results screen, press the F5 (browser refresh) button.

ALL Results are available on a separate tab. An episode will appear on both the New Results tab and the All Results tab until it has been viewed. After viewing, it will only appear on the All Results List.

To View Results:

1. Highlight the episode row
2. Press the Episode Enquiry button, or double click on the row.

ISS-nQuire v2.0 - Episode Search - Internet Explorer, optimized for Bing and MSN

Episode Search Configuration

Help Favourites » GOSH Close

Patient Detail

Address: Patient Id: Auto DoB: Gender: Health Identifier:

New Results All Results

Page size: 25 Results: 500+ Page: 1 2 3 4 5 >> | of 20

Search	Patient	Patient Id	Episode No	Date Collected	Test	
		11687		19 Oct 2015	Methotrexate	View
		10257		16 Oct 2015	Methotrexate	View
		10257		17 Oct 2015	Methotrexate	View
		10257		16 Oct 2015	Methotrexate	View
		11015		12 Oct 2015	Methotrexate	View
		11015		12 Oct		View
		11679		12 Oct		View
		11591		12 Oct		View
		10994		12 Oct		View
		11679		12 Oct		View
		11405		12 Oct		View
		11015		11 Oct 2015	Methotrexate	View
		11274		11 Oct 2015	Urine creat	View
		11015		10 Oct 2015	Methotrexate	View
		11274		10 Oct 2015	Insulin	View
		11274		10 Oct 2015	PAA	View
		10885		09 Oct 2015	Methotrexate	View
		10603		09 Oct 2015	Methotrexate	View
		9378		09 Oct 2015	Methotrexate	View
		11274		09 Oct 2015	BSCARN	View
		10885		08 Oct 2015	Methotrexate	View
		10884		08 Oct 2015	Methotrexate	View
		9378		08 Oct 2015	Methotrexate	View
		11275		08 Oct 2015	Insulin	View
		11690		08 Oct 2015	Urine creat	View

To view results either

- Double click a row
- Highlight row with a single mouse click and click 'Results Enquiry' button

Results Enquiry

Page Size	This value indicates the number of episodes displayed on one page (set at 18 by default). This value can be adjusted by each HCP as required, and upon subsequent visits to the enquiry site, this value is stored as the default for the HCP.
Patient	Displays the patients' Name, in the format SURNAME, GIVEN NAME. A column filter exists for Patient. Type in full or partial SURNAME and press TAB key to update the episode listing. Entry of SURNAME, INITIAL will also search for patient (e.g. SMITH, A)
Patient #	Displays the patients nQuire reference number . A column filter exists for Patient #. Type in full or partial MRN and press TAB key to update the episode listing.
Lab Number	Displays the Lab Number. A column filter exists for Lab Number. Type in the LAB NUMBER and press TAB key to update the episode listing.
Date Requested	Displays the Date Requested. Episodes are listed in reverse chronological order by Date Requested.
Test	Displays the Tests Requested.
Episode Enquiry BUTTON	Once an episode row is highlighted, select Episode Enquiry to view results. Double clicking a result row will also display results.